



CASTING CONNECTION

Dear Valued Customer,

I'm writing to you today to inform you of an important update regarding the Ransom & Randolph business.



Ransom & Randolph has been in operation almost 150 years, operating as a wholly owned subsidiary of Dentsply Sirona for more than 50 years. Dentsply Sirona has decided to divest certain non-core operations to streamline its product focus and invest in developing efficiencies on core product lines.

As such, Dentsply Sirona has entered into an agreement with PMC Capital Partners, LLC regarding the sale of the Ransom & Randolph business and the operations in Maumee, Ohio. We expect the sale to close in early February.



PMC Capital Partners, LLC is a private equity firm headquartered in Los Angeles, California that's backed by a multi-billion-dollar conglomerate to invest in strategic opportunities where thought, operational resources and flexible capital can empower management teams to execute their business plans.

The R&R Management team is focused on several initiatives to provide our customers with innovative products and services, and the sale of R&R to PMC Capital supports this focus. We are pleased to have found a good solution for our employees, customers and for the business.

Our team is committed to continue providing you with the same exceptional service and quality products which you expect, and we assure you that the transition will be seamless.

We are excited to continue the Ransom & Randolph legacy of innovation and growth while we enter this next chapter in our storied history together. Thank you for the trust you continue placing in us and our products.

Best regards,

Daniel Nixon, President, Ransom & Randolph LLC



Inside this issue

Using Slurry Control Worksheets.....	2
Select Dental Investments Now Available Online!	3
MJSA Expo 2021 Rescheduled.....	3
Jewelry Injection Wax Guidelines: Wax Temperature.....	4
Vicenzaoro T.Gold 2021 Rescheduled.....	6



Select Dental Investments Now Available Online!

We are excited to announce the following dental investments are now available for order through our webstore:

- [All Purpose Protective Coat](#)
 - A slurry consisting of refractory powders and a specialized liquid binder specifically designed for use as a face coat
 - When used during the refractory model and investing steps, will help ensure optimal surface smoothness, thereby improving accuracy and minimizing finishing time and labor
- [Aquamex™ Water Mix oxyphosphate investment](#)
 - An oxyphosphate-bonded investment that uses water as a binder
 - Used for partial denture fabrication
 - Burnout in a gas or electric oven
- [Oxyplus™ investment](#) & [Oxyplus™ investment liquid](#)
 - An oxyphosphate dental investment for making models
- [Protective Coat powder](#) & [Protective Coat liquid](#)
 - Specifically designed to be used as a face coat
 - Can be mixed to your preferred thickness
 - When used during the refractory model and investing steps, will help ensure optimal surface smoothness, thereby improving accuracy and minimizing finishing time and labor

R&R dental investments are specifically designed for casting dental models that can be used to make crowns, bridges and partial frameworks.



Shop our webstore!

Dental Investments:
shop.ransom-randolph.com/dental-investments

All Dental Casting & Modeling Products:
shop.ransom-randolph.com/dental-casting-modeling



Learn more about all our dental products at: ransom-randolph.com/dental

MJSA Expo 2021 Rescheduled

MJSA has rescheduled its 2021 Expo trade show from March to August.

The MJSA Expo is the largest and oldest show dedicated to professional excellence in jewelry making and design. Thousands of buyers fill its aisles and connect with the industry's finest suppliers and service providers. They can also find renowned experts within easy reach, thanks to Expo's world-class seminar program.

New Dates: August 8-10, 2021

Venue: Javits Center, New York City

Learn More: mjsa.org/eventsprograms/mjsa_expo

Look for R&R at this year's show!



*The Longest-Running Show
for Jewelry-Making Tools,
Technologies, Supplies,
& Services*



R&R Tech Tips

Looking for other technical tips or just need general technical support?

Visit us online at: www.ransom-randolph.com/technical-tips

Or contact our technical team at: RR-Technical@dentsply.com

Jewelry Injection Wax Guidelines: Wax Temperature



Jewelry casters use specially formulated injection waxes to produce high quality wax patterns.

To make the most of the inherent features and benefits in your jewelry injection wax, R&R recommends following these simple guidelines for wax temperature.

R&R suggests purchasing a separate testing thermometer that is accurately calibrated. The secret to consistent injection is monitoring and reproducing the same temperature every time you inject.

Most thermometers built into wax injection pots read temperature inside a hollow, air filled metal sleeve located somewhere near the center of the pot. While this provides some idea of temperatures inside the pot, it is not nearly as accurate as taking the actual wax temperature by submersing a separate testing thermometer into the wax.

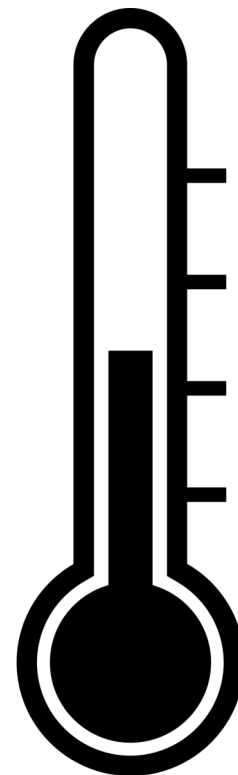
To get an accurate wax temperature reading, all the wax in the pot must be at a relatively even temperature overall. To get the most accurate temperature reading with a separate thermometer, leave the wax pot on continuously at the

appropriate injection temperature setting.

You may notice a temperature reading differential from 4-8° depending upon the pot's thermometer location versus the testing thermometer. Make note of this difference for future reference.

Taking all factors into consideration that will affect wax injection, such as: thermometer accuracy, drafts, proximity of air conditioning vents, etc., set the temperature controller to the lowest possible recommended setting for the particular wax.

To obtain optimum results, you should tweak the wax temperature 1° at a time, bringing it down to the coolest injection temperature possible. Be sure to allow at least 1-hour soak time between tests to permit the wax to fully stabilize at the new temperature setting.



Using Slurry Control Worksheets

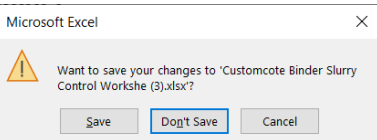
• continued from page 2 •

5. Select your tank type from the drop down menu in A1. For cylindrical tanks, enter the tank diameter and slurry depth in **ORANGE** in section A. For tear drop tanks, enter inches from top of tank in **ORANGE** in section A. Slurry volume will be displayed once you enter the tank dimensions.

6. Enter the target values for binder or silica solids and refractory solids in **GREEN** in section B. If you don't know what these are, contact the R&R technical department for assistance: RR-Technical@dentsply.com 800-800-7496

7. Enter the results of the tests you performed on the slurry. There are two ways to do this. Directly input the values for slurry density, total solids, and specific gravity in **BLUE** in Section C. Or, manually enter all data in **RED** in sections H, I and J if you want the worksheet to calculate the values.

8. Once the tests are completed and the values are entered, the worksheet will automatically calculate if you need any water additions in section E, any binder additions in section G to bring your slurry back into control. If additions are required, they appear in boxed fields in sections E, F and G.



9. Simply close out the worksheet, without saving it, and repeat the next time you test your slurry.

Watch the Video on YouTube!



R&R YouTube Channel:
www.youtube.com/c/RansomRandolph

Using Slurry Control Worksheets:
youtu.be/BU47c4IAmB4



Vicenzaoro T.Gold 2021 Rescheduled



Vicenzaoro T.Gold has rescheduled its 2021 show from March to September.

This is the international show for jewellery machinery and the most innovative technologies applied to gold and jewellery processing.

New Dates: September 10-14, 2021

Where: Vicenza, Italy

Learn More: www.vicenzaoro.com/en/t-gold

Look for R&R at this year's show!

Organized by:

**ITALIAN
EXHIBITION
GROUP**

Providing the future

Contact Us

3535 Briarfield Boulevard
PO Box 1570
Maumee, Ohio 43537 USA

US Toll Free: 800.253.4502
US Phone: 419.865.9497

US Fax: 419.865.9997

Email:
RR-Marketing@dentsply.com

Web:
www.ransom-randolph.com

Webstore:
shop.ransom-randolph.com

Social:



Ransom & Randolph



At R&R, *Investing with Innovation™* is more than just a slogan, it's a way of life. Dedicated to advancing the investment casting industry, we take pride in providing foundries with extensive process knowledge, exceptional technical expertise and innovative product technology. By coupling our revolutionary product developments with our experienced staff, manufacturing and warehousing facilities, we successfully help you become a casting industry leader. R&R is a wholly owned subsidiary of Dentsply Sirona (NASDAQ: XRAY).

R&R's core businesses are comprised of ceramic shell, industrial mold, jewelry and dental investment casting.

R&R takes great pride in providing customers with a pleasant procurement experience. R&R's Maumee, Ohio based customer service team services North America and US export customers. Our UK-based agent, HTM Tradeco, Ltd., provides service for the European Union. From initial order placement through delivery, R&R's customer service team takes responsibility for accurate and efficient processing of your material needs. As a result, R&R's customer service team is unmatched in the industry.

Investing with Innovation™